



AirRadio

NOT ONLY FOR DETECTION



BEIJING WEIGUO INTELLIGENT TECHNOLOGY CO.,LTD

Headquarter: 15A08, Block B, Building 103, Huizhong Lane, Chaoyang District, Beijing, China

Factory address: No.169 Xuesong Road, National High-Tech zone, Zhengzhou, 450001, China

Tel: +86-371-67169566

Email: sales1@airradio.cn

Web: <http://www.weiguopay.com>



Stock code: 300007

About Hanwei

Henan Hanwei Electronics Co.,Ltd.(Stock no.:300007) founded in 1998, is a trustworthy innovative technology company, and the largest gas sensors and instruments manufacturer in China and listed on China's Growth Enterprise Board in the first batch, devoting ourselves to promise a safe, environmental friendly, healthy and smart working and living environment. Based on IOT industry, Hanwei Electronics will combine sensors, intelligent terminals, communication technology, cloud computing and geographic information IOT technology together closely to create Hanwei cloud so as to establish a complete IOT industry chain. Hanwei Electronics focuses on the customer value oriented, provide perfect solutions for smart city, production safety, environmental protection, health of the people's livelihood.

Hanwei Sky



About Weiguo

Beijing Weiguo Intelligent Technology Co., Ltd, is an innovative technology company in China and is the pillar enterprise of the healthy home business division of Hanwei Electronics (stock number: 300007). Focusing on the complete chain of design, R&D, production and sales of "AirRadio" air quality products, we strive to supply air health service for the human beings in the world.



AIR QUALITY MONITOR

A1 / A2 / A6 / A2-SE / E1-pro / E2

GAS ALARM

R1 / R2 / I1 / N1

SENSOR

Pm2.5 laser sensor
Formaldehyde sensor
Infrared carbon dioxide sensor
Formaldehyde module

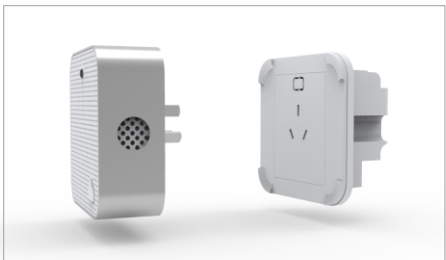


FEATURES

Monitor PM2.5 / PM10, CO₂, VOC, temperature, humidity simultaneously;
Dot matrix LED display, real time monitoring;
Anodized aluminum oxide and ABS engineering plastics combined technology;
High precision PM2.5 laser sensor, WIFI module, infrared module and CO₂ sensor;
App, WeChat remote monitoring;
Interactive control with smart socket, air purifier and ventilation system.

SPECIFICATION

PM2.5	Range	0~1000ug/m3
	Precision	≤ ± 10%
VOC	Range	0~100
	Precision	≤ ± 5%
CO ₂	Range	0~5000ppm
	Precision	≤ ± 5%
Temperature	Range	-20~70℃
	Precision	≤ ± 2℃
Humidity	Range	0~100%RH
	Precision	≤ ± 3%
Power Supply		DC5V/1A 800mAh
Net Weight		173g
Dimension		125mm x 65mm x 28mm



FEATURES

7 in one detection-PM2.5, CO2, formaldehyde, temperature, humidity, illumination, noise;
High illumination LED dot matrix display;
APP, WeChat remote monitoring, intelligent interactive control;
Record storage and review function;
“One button” to adapt to network, re-connect automatically when disconnected;
Support WIFI, infrared conversion and other means of communication.

SPECIFICATION

PM2.5	Range	0~1000ug/m3
	Precision	≤ ± 10%
Formaldehyde	Range	0~3mg/m3
	Precision	≤ ± 5%
CO2	Range	0~5000ppm
	Precision	≤ ± 5%
Noise	Range	30~130dB
	Precision	≤ ± 5dB
Illumination	Range	0~60000lux
	Precision	≤ ± 5%
Temperature	Range	-40~120℃
	Precision	≤ ± 1℃
Humidity	Range	0~100%RH
	Precision	≤ ± 3%
Power Supply		Optional AC110~220V 50HZ or DC5V/1A 800mAh
Net Weight		200g
Dimension		86mm x 86mm x 33mm



FEATURES

- HD TFT LCD display;
- Measuring PM2.5, PM10, Temperature and humidity and customized with CO2 or HCHO;
- Easy to connect to network;
- APP remote monitoring;
- Historical data displayed on device.

SPECIFICATION

PM2.5	Range	0~500ug/m3
	Precision	≤ ± 10%
PM10	Range	0~500ug/m3
	Precision	≤ ± 10%
CO ₂	Range	0~5000ppm
	Precision	≤ ± 5%
HCHO	Range	0.04~4.00mg/m3
	Precision	≤ ± 5%
Temperature	Range	-40~+60℃
	Precision	≤ ± 2℃
Humidity	Range	0~100%RH
	Precision	≤ ± 5%RH
Power Supply		Adaptor 5V/1A, Lithium Battery 1800mAh
Dimension		132mmX72mmX37mm



FEATURES

6 in one detection-PM2.5, PM10, formaldehyde, TVOC, temperature and humidity;
High-definition LCD screen; one key to switch data;
Dual alarm-screen flash and audible alarm when over presetting value;
High precision and long life sensors to provide the accurate detecting values.

SPECIFICATION

HCHO Range	0~4.0mg/m3
TVOC Range	0~9.9mg/m3
PM2.5 Range	0~999ug/m3
PM10 Range	0~999ug/m3
Temperature Range	-10~45℃
Humidity Range	20%~85% RH
Power Supply	Li-ion battery, 3.7V
Dimensions	72mmX132mmX37mm



FEATURES

High precision PM2.5 laser sensor;
Accurate and stable algorithm with self-owned intellectual property patent;
Multi-color strip lights indicating the air quality levels;
App, WeChat remote monitoring, intelligent interactive control;
Support WIFI / Bluetooth communication.

SPECIFICATION

PM2.5	Range	0~500ug/m3
	Precision	≤ ± 10%
PM10	Range	0~500ug/m3
	Precision	≤ ± 10%
Temperature	Range	-20~70℃
	Precision	≤ ± 2℃
Humidity	Range	0~100%RH
	Precision	≤ ± 5%
Power Supply		DC5V/1A 800mAh
Net Weight		60g
Dimension		Φ61mm x 80.5mm



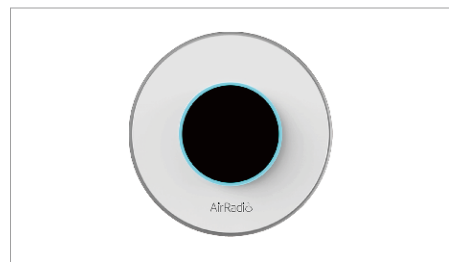
FEATURES

- Portable detector, one button operation;
- LCD display;
- Auto calibrating to decrease the false alarm;
- Anodized aluminum oxide and ABS engineering plastics combined technology.

SPECIFICATION

Formaldehyde	Range	0~3mg/m3
	Precision	≤ ± 5%
Temperature	Range	-40~120℃
	Precision	≤ ± 1℃
Humidity	Range	0~100%RH
	Precision	≤ ± 3%
Power Supply		DC5V/1A 920mAh
Charging Time		4h~6h
Working Time		≥48h continuously
Net Weight		150g
Dimension		125mm x 65mm x 28mm

R1 GAS ALARM



FEATURES

Detect natural gas and carbon monoxide gas simultaneously;
Electrochemical CO sensor and flat surface semiconductor gas sensor with UL approval;
Anodized aluminum oxide and ABS engineering plastics combined shell;
Self-test and false alert function;
Plug in the socket directly, no need to install;
WIFI communication, App remote monitor.

SPECIFICATION

Model Number	R1
Sensor Type	Semiconductor and electrochemical
Gas Sampling	Natural diffusion
Detect Range	Natural gas: 0~100%LEL, CO: 0~1000ppm
Presetting Alarm Level	Natural gas:7%LEL, CO: 100ppm
Warm-up Time	180±10S
Response Time	(t90)≤30S
Restore Time	≤30S
Working Voltage	AC90V~265V
Alarm Volume	≥70dB
Alarm Method	Visual and audible
Working Environment	Temperature: -10 ~ 50℃, Humidity: <95%RH (No dew)
Atmospheric Pressure	86kPa~106kPa
Storage Temperature	-25 ~ 55℃
Lifespan	3~5 Years
Net Weight	200g
Dimension	Φ120mm X 26.5mm



FEATURES

20000 times vibration test, 28 days long aging time;
Back sticker design, installation flexibility, no damage to the wall;
Could be linked to electromagnetic valve;
APP remote monitoring, WeChat binding support.

SPECIFICATION

Model Number	R2
Target Gas	Natural gas (CH4, Methane)
Working Environment	Temperature: 0 ~ 40 ℃ Humidity: <95%RH (No frost)
Gas Sampling	Natural diffusion
Detecting Range	0~100% LEL
Presetting Alarm Level	7% LEL
Warm-up Time	180±10S
Sensor Type	Semiconductor
Lifespan	5 Years
Working Voltage	AC90V~265V
Alarm Method	Visual, audible, message
Alarm Volume	≥70dB
Net Weight	150g
Dimension	85.0mm x 85.0mm x 40.5mm



FEATURES

Optional for natural gas or LPG;
100% gas sensing platinum electrode, high resolution to avoid false alarm;
Visible and audible alarm;
Low power consumption, 2KWH per year;
Up to 70dB alarm sound, ring warning light design.

SPECIFICATION

Model Number	I1
Target Gas	Natural gas (CH ₄ , Methane) / LPG (C ₃ H ₈ , Propane)
Working Environment	Temperature: 0 ~ 40℃ Humidity: <95%RH (No frost)
Gas Sampling	Natural diffusion
Detecting Range	0~100% LEL
Presetting Alarm Level	7% LEL
Warm-up Time	180S
Sensor Type	Semiconductor
Lifespan	5 Years
Working Voltage	AC90V~265V
Alarm Method	Visible and audible
Alarm Volume	70dB
Net Weight	100g
Dimension	59mm x 59mm x 40mm



FEATURES

99.9% gas sensing platinum electrode, highly resolution to avoid false alarm;
Ring alarm indicator design;
Low power consumption, 2KWH per year;
App remote monitor.

SPECIFICATION

Model Number	N1
Target Gas	Natural gas (CH4, Methane)
Working Environment	Temperature: 0 ~ 40 degree Celsius Humidity: <95%RH (No Frost)
Gas Sampling	Natural diffusion
Detecting Range	0~100% LEL
Presetting Alarm Level	7% LEL
Warm-up Time	180±10S
Sensor Type	Semiconductor
Lifespan	5 Years
Working Voltage	AC90V~265V
Alarm Method	Visual and audible
Alarm Volume	70dB
Net Weight	190g
Dimension	Φ90mm x 40mm

PM2.5 Laser Sensor

- High sensitivity
- High resolution
- Low consumption



SPECIFICATION

Range	1~1000ug/m3	Resolution	1ug/m3
Precision	-10%~+10%	Response Time	≤3s
Communication Interface	UART@3.3V	Working Voltage	5V
Working Current	<100mA	Working Temperature	10℃~60℃
Dimension	50*33*20.5mm	Lifetime	>30000h

Formaldehyde Sensor

- High precision
- Small volume
- Easy maintenance

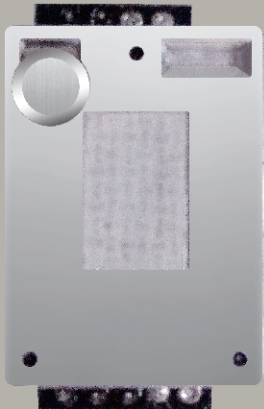


SPECIFICATION

Resolution	0.01ppm	Range	0~10ppm
Response Time	60s	Maximum load	30ppm
Output Signal	300±50nA / ppm	Working Temperature	-20℃~5℃
Pressure	±10%	Repeatability	≤2
Lifetime	2 years		

Infrared Carbon Dioxide Sensor

- Real-time response
- Accurate data



SPECIFICATION

Sensor Technology	NDIR	Warm Up Time	<120s
Response Time (T90)	<45s	Operating Voltage	4.0~5.5 VDC
Precision	±(40ppm +3%reading value) Full temperature automatic calibration		
Range	Optional 0~2000ppm, 0~5000ppm, 0~10000ppm, 0~50000ppm		
Working Current	15mA	Peak Current	160mA
UART Interface	3.3 VDC	PWM Output	Cycle:1004ms, Pulse Width: PPM/2 + 2ms

Formaldehyde Module

- Real-time response
- Accurate data



SPECIFICATION

Sensor	Electrochemical	Target Gas	Formaldehyde
Range	0~5ppm	Working Voltage	3.3V~5V
Resolution	0.01ppm	Response Time	30S
Maximum load	30ppm	Output Signa	UART(3V), Simulation Signal: 0.4~2V
Working Temperature	-20℃~50℃	Lifetime	≥3 years